

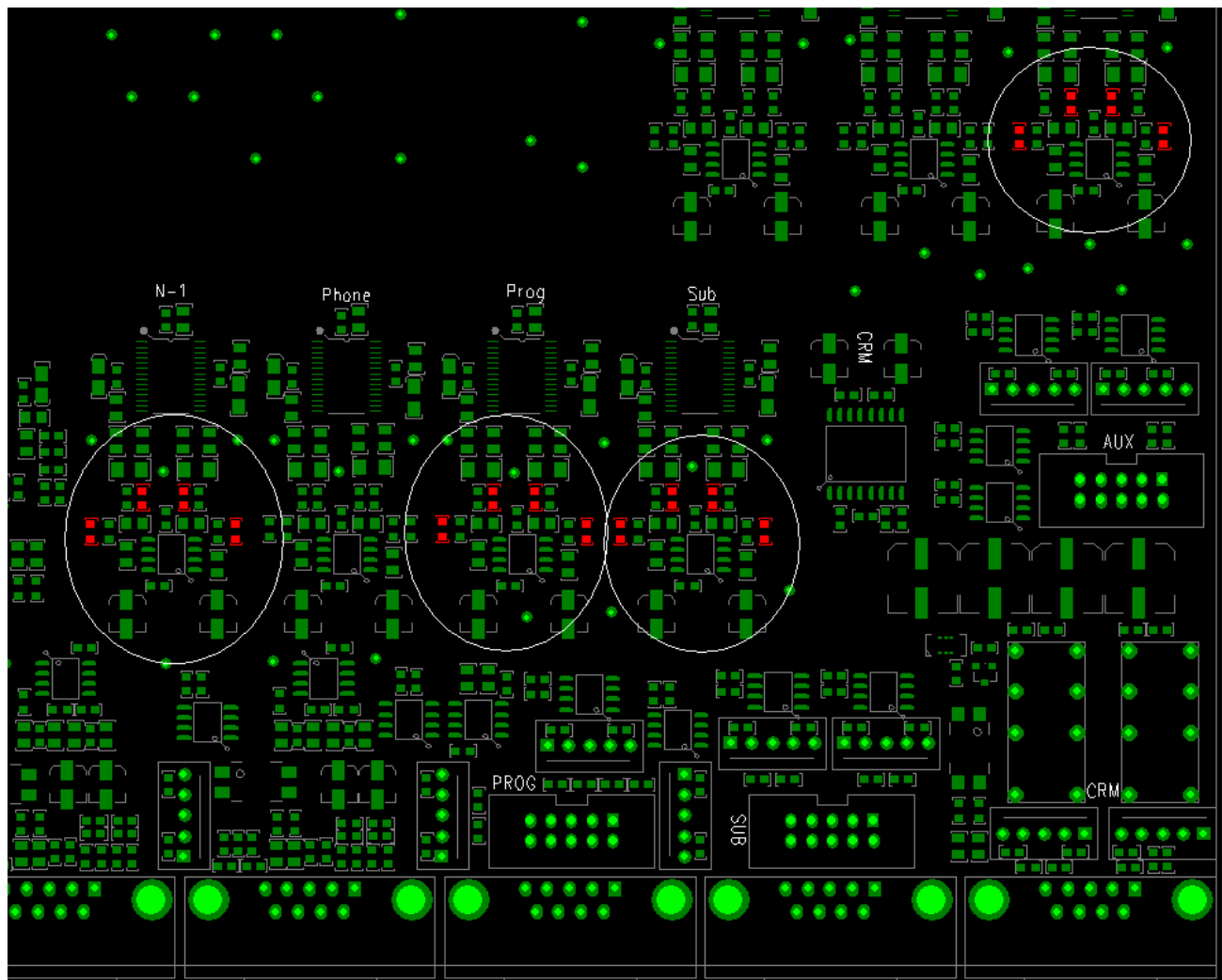
Lyra analog out at +4dB

Normal the Lyra analog output is +6dBu to change this to +4dB the resistors in the following table need to be changed on the Lyra-ANA PCB

+6dBu = 14k7 Ohm (SMD 0603)

+4dBu = 12k0 Ohm (SMD 0603)

Output	Resistor Part number
Prog	R188, R189, R194, R195
Sub	R142, R149, R186, R187
Aux	R213, R214, R219, R220
N-1	R211, R212, R204, R205



Lyra-ANA PCB